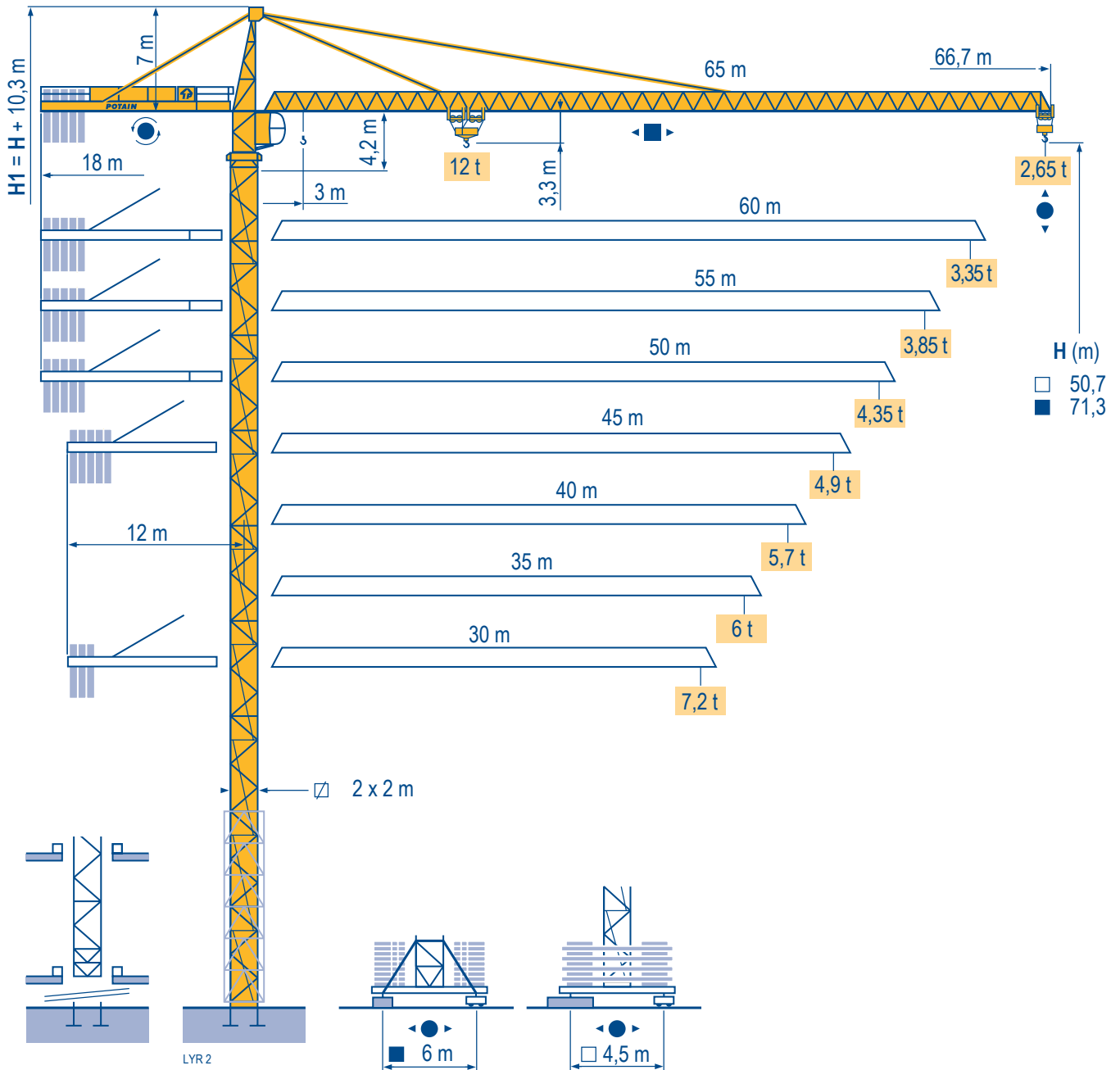
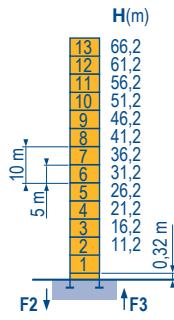


## MD 265 B1 J12



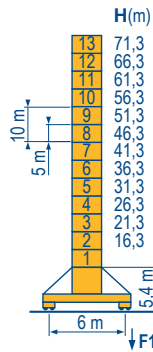
Mat / Réactions  $\square$  2 m  
 Maste / Eckdrücke  $\square$  30 m  $\Rightarrow$  65 m  
 Masts / Reactions  
 Mástil / Reacciones  
 Torre / Reazioni  
 Tramo / Reações

LVR 1



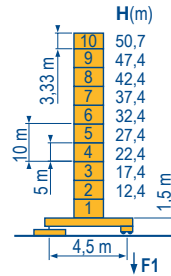
P 61 A

F2	● 166 t
	■ 224 t
F3	● 114 t
	■ 177 t
	▲ 73 t



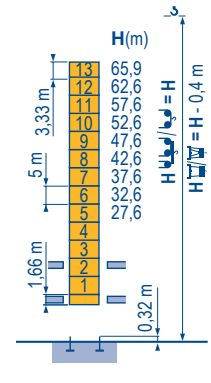
V 60 A

F1	● 114 t
	■ 147 t
	▲ 86 t



ZD 463

F1	● 96 t
	■ 96 t
	▲ 78 t

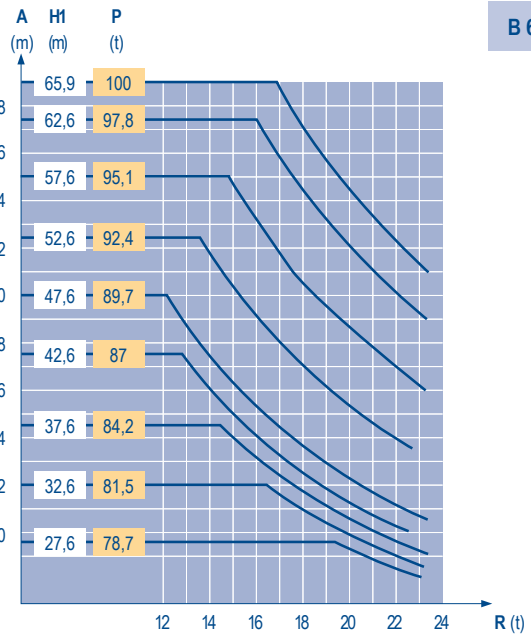
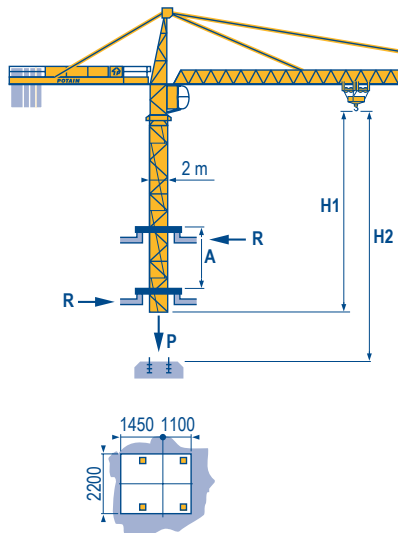


B 60 A



Télescopage sur dalles  
 Kletterkrane im Gebäude  
 Climbing crane  
 Telescopage gruas trepadoras  
 Gru in cavedio  
 Telescopagem sobre lages

LVR 1



B 60 A

TOPKIT  
 MD 265 B1 J12

POTAIN

F	D	GB	E	I	P
● Réactions en service	● Reaktionskräfte in Betrieb	● Reactions in service	● Reacciones en servicio	● Reazioni in servizio	● Reações em serviço
■ Réactions hors service	■ Reaktionskräfte außer Betrieb	■ Reactions out of service	■ Reacciones fuera de servicio	■ Reazioni fuori servizio	■ Reações fora de serviço
A vide sans lest (ni train de transport) avec flèche et hauteur maximum.	Ohne Last, Ballast (und Transportachse), mit Maximalausleger und Maximalhöhe.	Without load, ballast (or transport axles), with maximum jib and maximum height.	Sin carga, sin lastre, (ni tren de transporte), flecha y altura máxima.	A vuoto, senza zavorra (ne assali di trasporto) con braccio massimo e altezza massima.	Sem carga (nem trem de transporte)- sem lastro com lança e altura máximas.
Nous consulter	Auf Anfrage	Consult us	Consultarnos	Consultateci	Consultar-nos

### Courbes de charges

### Lastkurven

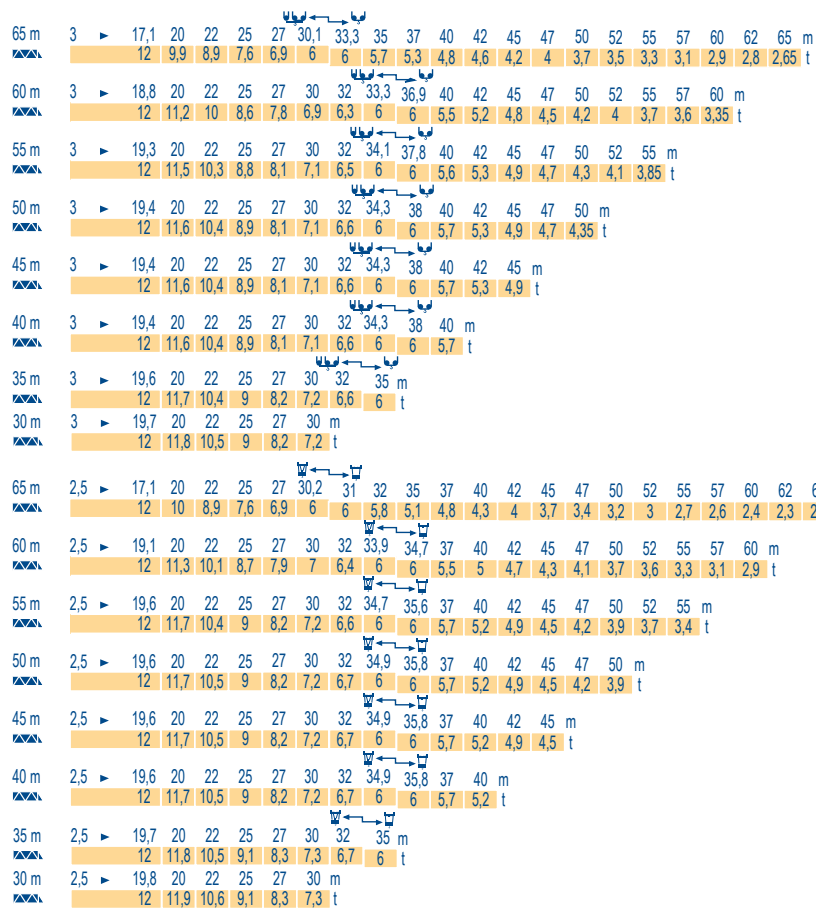
### Load diagrams

### Curvas de cargas

### Curve di carico

### Curva de cargas

LVR 1



### Lest de contre-flèche

### Gegenauslegerballast

### Counter-jib ballast

### Lastre de contra flecha

### Contrappeso

### Lastros da contra lança

LVR 2

	4 600 - 4 200 - 3 400 - 2 300 kg		4 200 - 700 kg	
		50 - 75 - 100 LVF (kg)	50 - 75 - 100 LVF (kg)	150 LCC (kg)
65 m	18 m	19 900	19 600	17 500
60 m	18 m	18 400	18 200	16 800
55 m	18 m	16 000	15 400	14 000
50 m	18 m	13 700	13 300	11 900
45 m	12 m	25 200	24 500	23 800
40 m	12 m	24 100	23 100	21 700
35 m	12 m	20 600	19 600	18 200
30 m	12 m	16 000	15 400	14 000

### Lest de base

### Grundballast

### Base ballast

### Lastre de base

### Zavorra di base

### Lastros da base

LVR 1

V	H (m)	H (m)												
		71,3	66,3	61,3	56,3	51,3	46,3	41,3	36,3	31,3	26,3	21,3	16,3	
2 m	V 60 A	132	96	72	60	36	36	36	36	36	36	36	36	36
2 m	ZD 463	75	75	75	75	75	75	75	75	75	75	75	75	75

### Ancrages

### Verankerungen

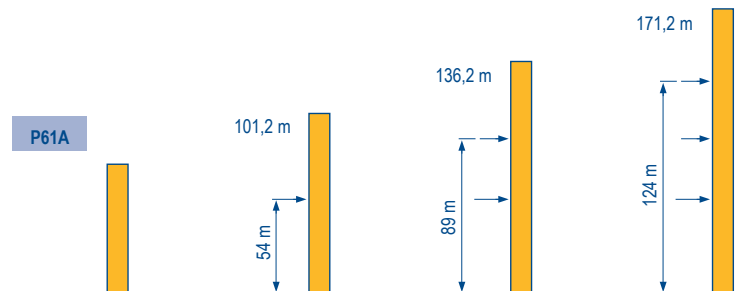
### Anchorges

### Anclaje

### Ancoraggio

### Ancoragem

LVR 1



### TOPKIT



### MD 265 B1 J12

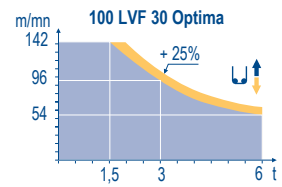
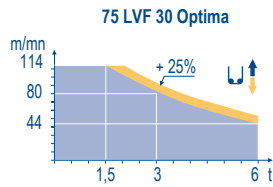
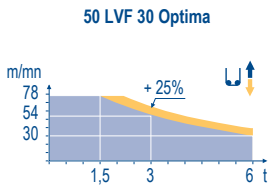


	F	D	GB	E	I	P
<b>A</b>	Distance entre cadres	Abstand zwischen den Rahmen	Distance between collars	Distancia entra marcos	Distanza fra i telai	Distância entre quadros
<b>H1</b>	Hauteur grue	Kranhöhe	Crane height	Altura grúa	Altezza gru	Altura da grua
<b>P</b>	Poids de la grue(en service)	Krangewicht (in Betrieb)	Crane weight (in service)	Peso de la grúa (en servicio)	Peso della gru (in servizio)	Peso da grua (em serviço)
<b>R</b>	Réaction horizontale	Horizontalkräfte	Horizontal reaction	Reaccion horizontal	Reazione orizzontale	Reacção horizontal
	Voir télescopage sur dalles	Siehe Kletterkrane im Gebäude	See climbing crane	Veja grua trepadora	Consultare gru in cavedio	Ver telescopagem sobre lages


Mécanismes  
Antriebe  
Mechanisms  
Meccanismi  
Mecanismos

LYR 5

		↕ ↑					↕ ↕ ↑					ch - PS hp	kW	
↕	50 LVF 30 Optima	m/min	2,4 → 9,6 → 30 → 38 → 54 → 78	1,2 → 4,8 → 15 → 19 → 27 → 39	50	37	340 m							
		t	6 6 6 4,5 3 1,5	12 12 12 9 6 3										
	75 LVF 30 Optima	m/min	0 → 44 → 56 → 80 → 114	0 → 22 → 28 → 40 → 57	75	55	570 m							
		t	6 4,5 3 1,5	12 9 6 3										
↕	100 LVF 30 Optima	m/min	0 → 54 → 68 → 96 → 142	0 → 27 → 34 → 48 → 71	100	75	1019 m							
		t	6 4,5 3 1,5	12 9 6 3										
	150 LCC 30	m/min	86 → 103 → 129 → 172 → 206	43 → 52 → 65 → 86 → 103	150	110	652 m							
		t	6 4,5 3 1,5 0,75	12 9 6 3 1,5										
↔	6 DVF 4	m/min	0 → 50 (12 t) 0 → 100 (6 t) 0 → 120 (3 t)					5,5	4					
↻	RVF 152 Optima +	tr/min U/min rpm	0 → 0,7					2 x 5,5	2 x 4					
↔	ZD 463 RT 443 A1 2V	m/min	15 - 30					4 x 5	4 x 3,7					
↔	V 60 A RT 544 A1 2V R ≥ 13 m	m/min	13,5 - 27					4 x 7	4 x 5,2					
		CEI 38			IEC 38	kVA								
		400 V (+6% -10%) 50 Hz				50 LVF : 70 kVA 75 LVF : 95 kVA 100 LVF : 120 kVA 150 LCC : 170 kVA								



- |              |            |            |              |               |              |
|--------------|------------|------------|--------------|---------------|--------------|
| <b>F</b>     | <b>D</b>   | <b>GB</b>  | <b>E</b>     | <b>I</b>      | <b>P</b>     |
| Levage       | Heben      | Hoisting   | Elevación    | Sollevamento  | Elevação     |
| Distribution | Katzfahren | Trolleying | Distribución | Distribuzione | Distribuição |
| Orientation  | Schwenken  | Slewing    | Orientación  | Rotazione     | Rotação      |
| Translation  | Kranfahren | Travelling | Traslación   | Traslazione   | Translação   |

 Document commercial non contractuel. Pour toute information technique se référer à la notice correspondante. Unverbindliches Vertriebsdokument. Für technische Informationen, siehe die entsprechenden Anweisungen. This commercial document is not legally binding. For any technical information, please refer to the corresponding instructions. Documento comercial no contractuel. Para cualquier información técnica, ver la noticia correspondiente. Documento commerciale non vincolante, per tutte le informazioni tecniche fare riferimento al catalogo istruzioni. Documento comercial não contractual. Para qualquer informação técnica complementar consultar as respectivas instruções.





**Americas**  
Tel : +1 888 479 7278  
Tel : +1 717 593 2000

**Europe - Middle East - Africa**  
Tel : +33 (0) 4 72 81 50 00  
Tel : +44 (0) 191 522 2000

**Asia - Pacific**  
Tel : +65 6264 1188  
Fax : +65 6862 4040

[www.manitowoccrane.com](http://www.manitowoccrane.com)

**18, rue de Charbonnières - B.R.173**  
**69132 ECULLY Cedex - France**  
Tél. : +33 (0) 4 72 18 20 20  
Fax. : +33 (0) 4 72 18 20 00  
[www.manitowoccrane.com](http://www.manitowoccrane.com)

**TOPKIT MD 265 B1 J12**  
Code J-91985-59\_Réf. 2003 48 LYR 5  
Copyright.Reproduction interdite © POTAIN 2003

Réalisation Sedoc